

## LANmark-6 Snap-in connector

- Cat 6 Snap-in available in 3 versions UTP, FTP, EMC.
- Fits in all structural hardware designed for this range.
- Easy termination, without punch down tool.
- An adapter can be added to fit the keystone format

### Description

#### Application

The LANmark-6 Toolless Snap-in connector is part of the Nexans modular system and fits in all structural hardware designed for this range. As such it supports all data applications defined for Cat5, Cat5E and Cat6, such as 10baseT, Fast Ethernet, Gigabit Ethernet, 155 ATM, 622 ATM, 1.2 ATM...

#### Performance

The LANmark-6 Snap-in connector has been designed to reach the highest performance in Cat 6 and Class E. It has outstanding performance for attenuation (insertion loss), NEXT/FEXT, Power Sum NEXT/FEXT and Return Loss, exceeding the Cat 6 connector specs as in ISO/IEC 11801:2002. The unique cross-technology in the connector ensures the high performance of the link. Used with Nexans LANmark-6 cables and patchcords, the connector is independently tested to exceed the link and stringent four-conductor channel requirements as defined in the ISO/IEC 11801:2002.

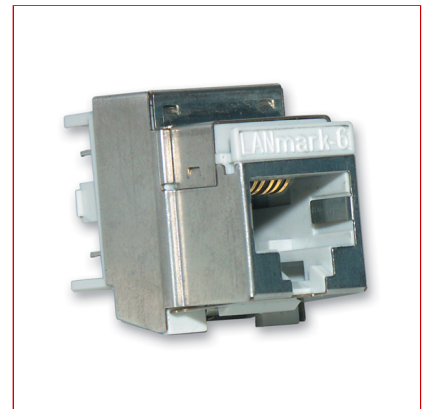
#### Guarantees

The LANmark-6 Snap-in connector is covered by the guarantee as in The General Terms and Conditions of Sales. In combination with the Nexans LANmark-6 product range, the Nexans Certified System Warranty can be obtained, covering parts, system and labour warranty.

#### Installation

The LANmark-6 Snap-in connector is a toolless connector. It is designed to be terminated by hand, without punchdown tool. For faster and easier installation of large volumes, an optional comfort tool can be used.

- Fast termination of cable
- Colour code : TSB568A & TSB568B
- Can be used with all types of cables : F<sup>2</sup>TP, UTP or STP
- Accepts 24, 23 and 22 AWG cable



**LANmark-6**

#### Standards

**International** ISO/IEC 11801

## LANmark-6 Snap-in connector

### Contact

Structured Cabling  
20 Harbour Drive  
#07-03 PSA Vista  
117612  
Singapore  
Phone: +65 63170 101  
Fax: +65 63170 103/04  
ron.lim@nexans.com, johnny.  
low@nexans.com

## LANmark-6 Snap-in connector

### Characteristics

#### Construction characteristics

Connector type

RJ45 and Tool-less IDC

### Electrical Performance

Frequency MHz	Attenuation	NEXT pp	PSNEXT	FEXT pp	PSFEXT	RL
1	0.1	94.0	90.0	83.1	80.1	30.0
4	0.1	82.0	78.0	71.1	68.1	30.0
10	0.1	74.0	70.0	63.1	60.1	30.0
16	0.1	69.9	65.9	59.0	56.0	30.0
20	0.1	68.0	64.0	57.1	54.1	30.0
31.25	0.1	64.1	60.1	53.2	50.2	30.0
62.5	0.2	58.1	54.1	47.2	44.2	28.1
100	0.2	54.0	50.0	43.1	40.1	24.0
125	0.2	52.1	48.1	41.2	38.2	22.1
155	0.2	50.2	46.2	39.3	36.3	20.2
175	0.3	49.1	45.1	38.2	35.2	19.1
200	0.3	48.0	44.0	37.1	34.1	18.0
250	0.3	46.0	42.0	35.1	32.1	16.0

All values are in dB

### Product List

Nexans ref.	Name	Height (mm)	Width (mm)
N20i.000	DIN-Rail mount - LANmark-6 Snap-in connector, Toolless connectivity, screened, with rear cover (EMC)	77.8	18
N420.666G	LANmark-6 10G EVO Snap-in connector, Toolless connectivity, screened, with rear cover (EMC) for solid wire	23.15	16.8
N420.667G	LANmark-6 10G EVO Snap-in connector, Toolless connectivity, screened, with rear cover (EMC) for stranded wire	23.15	16.8
N420.666	LANmark-6 EVO Snap-in connector, Toolless connectivity, screened, with rear cover (EMC) for solid wire	23.15	16.8
N420.667	LANmark-6 EVO Snap-in connector, Toolless connectivity, screened, with rear cover (EMC) for stranded wire	23.15	16.8
N420.660	LANmark-6 EVO Snap-in connector, Toolless connectivity, unscreened for solid wire	22.9	16.7
N420.661	LANmark-6 EVO Snap-in connector, Toolless connectivity, unscreened for stranded wire	22.9	16.7
N420.630N	LANmark-6 Snap-in connector, Toolless connectivity, screened, with rear cover (EMC)	19.5	17
N420.620N	LANmark-6 Snap-in connector, Toolless connectivity, screened, without rear cover	19.5	17

## LANmark-6 Snap-in connector

Nexans ref.	Name	Height (mm)	Width (mm)
N420.625	LANmark-6 Snap-in connector, Toolless connectivity, screened, without rear cover new version	19.5	17
N420.610N	LANmark-6 Snap-in connector, Toolless connectivity, unscreened	19.5	17
N420.615	LANmark-6 Snap-in connector, Toolless connectivity, unscreened new version	19.5	17