

Symantec™ Workspace Virtualization 7.5

Simplifies application packaging and delivery, eliminates application conflicts, supports normal visibility

Data Sheet: Endpoint Management

Improve the control and management of your organization's endpoints while reducing total cost of ownership with Workspace Virtualization. By placing applications and data into managed units, called Software Virtual Layers, Workspace Virtualization lets you instantly activate, deactivate, or reset applications. This eliminates application conflicts, simplifies application packaging and delivery, and makes it possible to run incompatible applications at the same time – all without changing the base Windows® installation.

Simplify Application Packaging and Delivery

Workspace Virtualization reduces the time spent packaging, testing, fixing, patching, and upgrading applications. You can easily activate, deactivate, or reset applications if they aren't performing properly. If the application requires isolation, there are several modes to choose from (hide layer from the OS, hide layer from other layers, hide other layers from this layer) – all without repackaging the application. Pre-deployment testing and post-deployment support is also reduced because you can easily roll-back an application to its prior version if needed.

To simplify the packaging process, Workspace Virtualization includes pre-configured virtual applications delivered as Layer Definition File (LDF) packages. LDF packages ensure that an exact replica of a layer is created regardless of the environment in which it is created. This avoids common pitfalls that often occur when capturing applications and also makes it easier to create virtual application layers for applications that are difficult to capture.

Symantec's Virtual Application Library contains 40+ pre-configured virtual applications delivered as LDF packages, so you can get started with Workspace Virtualization with very little experience in application virtualization or software packaging.

Key Benefits of Symantec™ Workspace Virtualization:

- Application conflicts are eliminated
- Incompatible applications can be run concurrently, including multiple versions of the same application
- “Broken” applications can be instantly reset
- Virtual applications interact normally with other applications and the OS
- Common functions like copy/paste, shell integration, launch points, etc. all work as expected
- No special user training is required
- Applications can be virtualized, delivered, and managed using Symantec™ IT Management Suite powered by Altiris™ technology, Symantec™ Client Management Suite powered by Altiris™ technology or Symantec™ Workspace Streaming

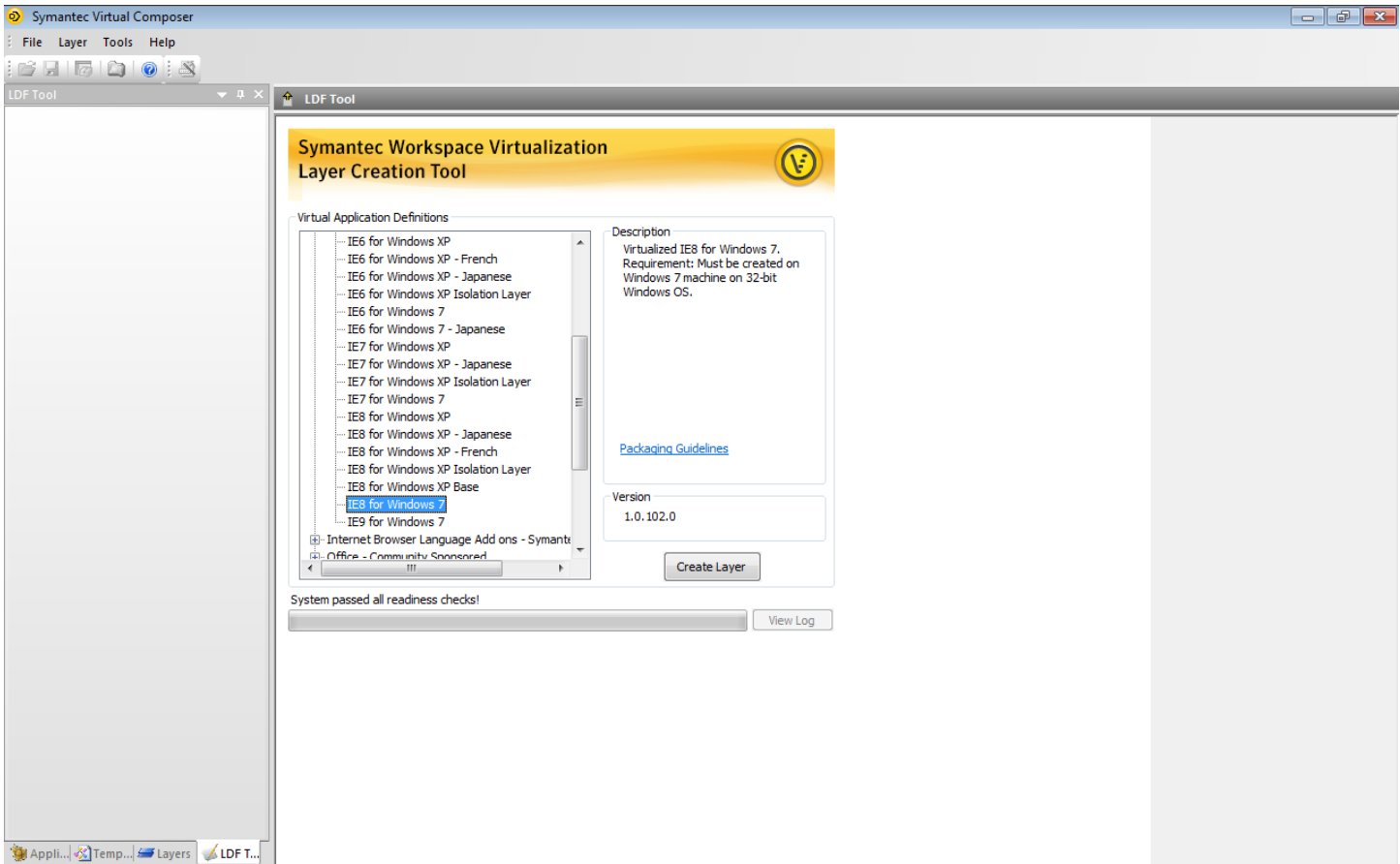


Figure 1: Workspace Virtualization includes a library of over 40 pre-configured virtual applications making it easier than ever to virtualize your applications

Eliminate Application Conflicts with Virtual Software Layers

Workspace Virtualization's patented filter driver technology means virtual layers are transparent to the base operating system and other applications. This unique technology eliminates application conflicts, such as .DLL version conflicts, and gives you the ability to run incompatible applications concurrently including multiple versions of the same application. This can be especially useful if you're migrating to a new Windows OS that doesn't support an older version of Internet Explorer. Since Workspace Virtualization isolates the application from the operating system, incompatible applications can be run without incident on the new OS.

Virtual Applications Perform as Expected with Normal Visibility

Applications virtualized with Workspace Virtualization execute and behave just like traditional applications that are physically installed on a machine. End users experience no difference in performance or actions between a virtualized application and a physical one. Virtualized applications also interact normally with other applications and the Windows operating system. Common functions like cut and paste, shell integration, launch points, and more all work as expected. Since the application functions normally, no user training is required which saves IT departments and business units time and money.

Integration with Client Management Suite

Workspace Virtualization is natively integrated with Client Management Suite so there's no difference in manageability, support, deployment scenarios, or inventory between installed and virtual applications. You can virtualize applications with Workspace Virtualization while delivering and managing virtual software layers with Client Management Suite.

Workspace Virtualization is a standard component of Client Management Suite, IT Management Suite, and Workspace Streaming.

For organizations using a different client management tool, virtual layers can be created using Workspace Virtualization and then distributed and activated with a third-party solution.

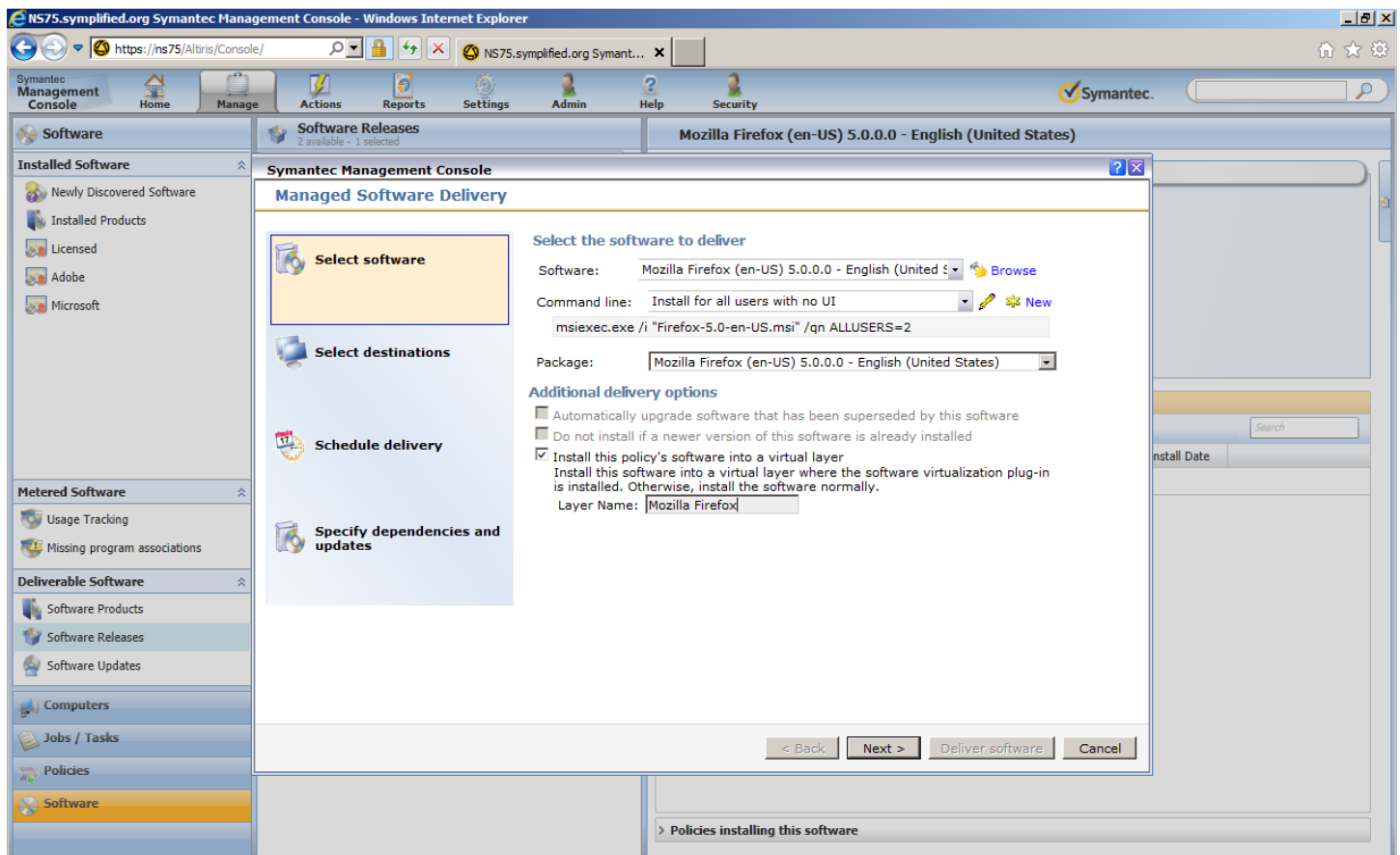


Figure 2: Virtual applications can be delivered and managed using Symantec Client Management Suite

Endpoint Requirements:

- System Processor: Same as recommended by the operating system and installed applications
- System Memory: Same as recommended by the operating system and installed applications
- Free Disk Space: 50 MB of free disk space plus additional space as required by installed applications

Supported Platforms:

64-bit editions of the following:

- Windows® 8
- Windows® 7 and 7 SP1
- Windows Vista® SP1 and Windows Vista SP2
- Windows Server® 2008 SP2

32-bit editions of the following:

- Windows 8
 - Windows 7 and 7 SP1
 - Windows Vista SP2
 - Windows Server 2008 SP2
 - Windows Server® 2003 SP2
 - Windows XP SP3 is recommended for English language versions and required for non-English language versions of XP
 - Windows® XP is supported with the additional components of Windows Installer 3.1: <http://support.microsoft.com/kb/893803> and the Filter manager roll up hotfix: <http://support.microsoft.com/kb/914882>
-

More Information

Visit our website

<http://enterprise.symantec.com>

To speak with a Product Specialist in the U.S.

Call toll-free 1 (800) 745 6054

To speak with a Product Specialist outside the U.S.

For specific country offices and contact numbers, please visit our website.

About Symantec

Symantec protects the world's information, and is a global leader in security, backup, and availability solutions. Our innovative products and services protect people and information in any environment – from the smallest mobile device, to the enterprise data center, to cloud-based systems. Our world-renowned expertise in protecting data, identities, and interactions gives our customers confidence in a connected world. More information is available at www.symantec.com or by connecting with Symantec at go.symantec.com/socialmedia.

Symantec World Headquarters

350 Ellis St.

Mountain View, CA 94043 USA

+1 (650) 527 8000

1 (800) 721 3934

www.symantec.com